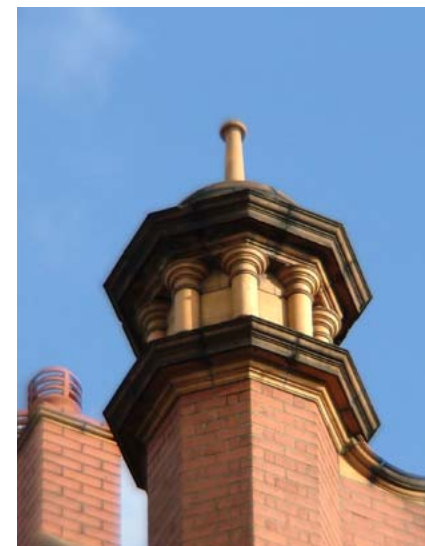
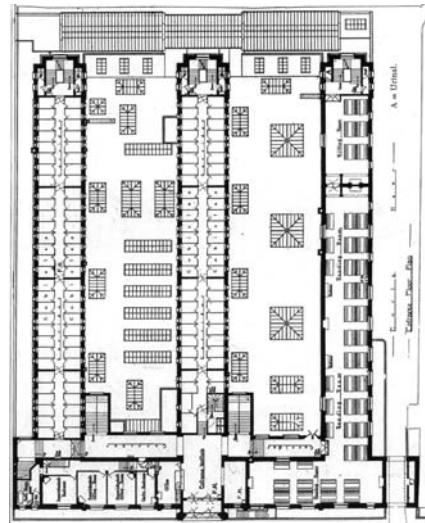


ARLINGTON HOUSE LONDON CONSERVATION PLAN



The enormous working men's hostel – the largest in Europe, is the only surviving example of several built in London by Rowton Houses Ltd, a public company which stemmed from philanthropic work begun by Lord Rowton in 1892. Now run by a housing association, its social as well as architectural and historic significance is recognised and celebrated in the Conservation Plan, prepared by CAP which reconciles history and 21st century standards of accommodation.



**CONSERVATION
ARCHITECTURE
& PLANNING**

Wey House Standford La.
Headley Hants. GU35 8RH
tel 01420 472830 fax 01420 477346

email: jack@capstudios.co.uk
website: www.capstudios.co.uk